

Biological Molecules

IGCSE Biology Topical Questions Paper 1

Oct/Nov 2003

- 11 Glycogen, protein and starch are all large molecules made from smaller basic units.

Which basic units form these molecules?

	glycogen	protein	starch
A	amino acids	simple sugars	fatty acids
B	fatty acids	simple sugars	simple sugars
C	simple sugars	amino acids	simple sugars
D	simple sugars	fatty acids	amino acids

May/June 2004

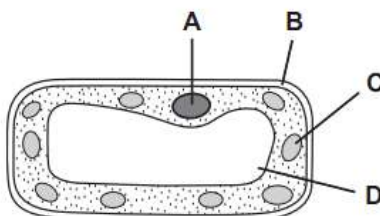
- 13 Which substance contains nitrogen?

- A** fat
- B** glucose
- C** protein
- D** starch

Oct/Nov 2004

- 6 The diagram shows a plant cell.

Which part will stain blue / black with iodine solution?



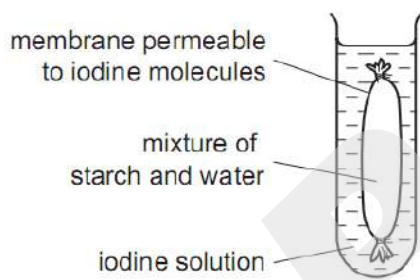
Oct/Nov 2007

14 Which elements do carbohydrates contain?

- A carbon, hydrogen and oxygen
- B carbon, hydrogen and sulphur
- C carbon, nitrogen and oxygen
- D carbon, nitrogen and sulphur

May/June 2008

11 An experiment is set up as shown.

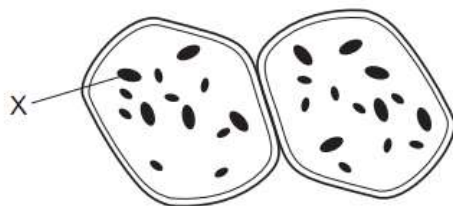


What is the colour of the starch and water mixture after 30 minutes?

- A blue-black
- B orange
- C white
- D yellow-brown

Oct/Nov 2008

- 15 The diagram shows cells from a storage organ of a flowering plant after they have been stained with iodine solution.



Structures X stain black.

What does this show that structures X contain?

- A chlorophyll
- B fat
- C starch
- D sugar

May/June 2009

- 14 Four foods were tested for
- fat (using ethanol),
 - protein (using the biuret test),
 - reducing sugar (using Benedict's solution),
 - starch (using iodine solution).

Which food contains protein and starch?

	colour of result of food test			
	blue / black	purple / lilac	brick-red / orange	milky-white
A	✓	x	✓	x
B	✓	✓	x	x
C	x	x	✓	✓
D	x	✓	x	✓

key

✓ = nutrient present

x = nutrient absent